

Section I

Activity Report Miyagi Disaster Mental Health Care Center Overview

FY 2012 Report
Overall Report
Department Initiatives

- . . . 1) Kesenuma Regional Center – Community Support Division (including municipal transfers)
- . . . 2) Ishinomaki Regional Center – Community Support Division (including municipal transfers)
- . . . 3) Stem Center – Community Support Division (including municipal transfers)
- . . . 4) Stem Center – Planning Division

Other Initiatives

- . . . 1) Tohokukai Hospital
- . . . 2) Tohoku University Graduate School of Medicine, Endowed Department of Preventive Psychiatry
- . . . 3) Miyagi Psychiatric Center
- . . . 4) Japanese Association of Psychiatric Social Workers
- . . . 5) Japan Social Worker Association for Alcohol Related problems

Miyagi Disaster Mental Health Care Center Overview

Stem Center, General Affairs Division

Vice President and Secretary General – Masahiro Suzuki

1. Organizational Overview

The MDMHCC was founded to provide long-term mental health care countermeasures in the wake of the Great East Japan Earthquake, including responses to the mental health issues faced by survivors, such as posttraumatic stress disorder (PTSD), depression, and alcohol addiction, technical assistance to supporters, and human resource development.

Our operating entity is the Incorporated association (currently a public interest incorporated association) known as the Miyagi Mental Health and Welfare Association (“the Association”). On December 1, 2011, the Stem Center was established in Sendai, and on April 1, 2012, Regional Centers were established in the coastal cities of Ishinomaki and Kesenuma.

Our organization is laid out thus. Under the President and Vice-President, the Stem Center has three divisions: General Affairs, Planning, and Community Support. The Regional Centers each have a President, under whom there is a Community Support Division tasked with developing support activities for disaster-affected individuals, and so on. In addition, we dispatch staff members to disaster-affected coastal cities and towns to provide support to local mental health and welfare activities.

Our staff is composed of psychiatrists, psychiatric social workers, clinical psychologists, public health nurses, and other qualified, specialized professionals. As of the end of March 2013, there are 34 full-time staff (of whom six have been dispatched to municipalities) and 22 part-time staff in our organization, making a total of 56 members.

2. Establishment of the Organization

Mental health care teams were dispatched immediately after the disaster as part of the emergency medical aid provided in accordance with the Disaster Relief Act. However, the importance of the long-term mental health care needs of disaster-affected individuals was pointed out.

On March 15, four days after the disaster, mental health and welfare workers and affiliated persons from across the prefecture met to exchange information. Three days later, on March 18, the prefecture of Miyagi, the city of Sendai, the Mental Health and Welfare Center, Tohoku University, and several organizations involved in mental health and welfare participated in a conference where the current state of mental health care activities, related issues, and necessary support measures were discussed. Thereafter, this conference was termed the “Mental Health Care Countermeasures Conference,” and was held regularly by the prefecture until July of that year.

At the April meeting, there was much discussion of future medium- to long-term mental health and welfare countermeasures, and the need for an organization to serve as a linchpin for the continued promotion of mental health care throughout the prefecture was highlighted.

In response to this, the prefecture requested the Association to consider the possibility of managing a “Mental Health Care Center.” The Association decided to be proactively involved in its establishment; at the May meeting of the conference, internal approval for the project was obtained.

Afterward, the Association visited and observed the Disaster Mental Health Care Centers in the prefectures of Niigata and Hyogo and received information and advice regarding initiatives to be undertaken during the setting up of the MDMHCC.

At the August meeting of the prefectural assembly, the budget for the “Disaster Mental Health Care Center Management Project” was approved as a Disaster Reconstruction Fund Project, and a budget for the Tohoku University Graduate School of Medicine, Endowed Department of Preventive Psychiatry (“Endowed Department”) was also allocated. This department was established on October 1.

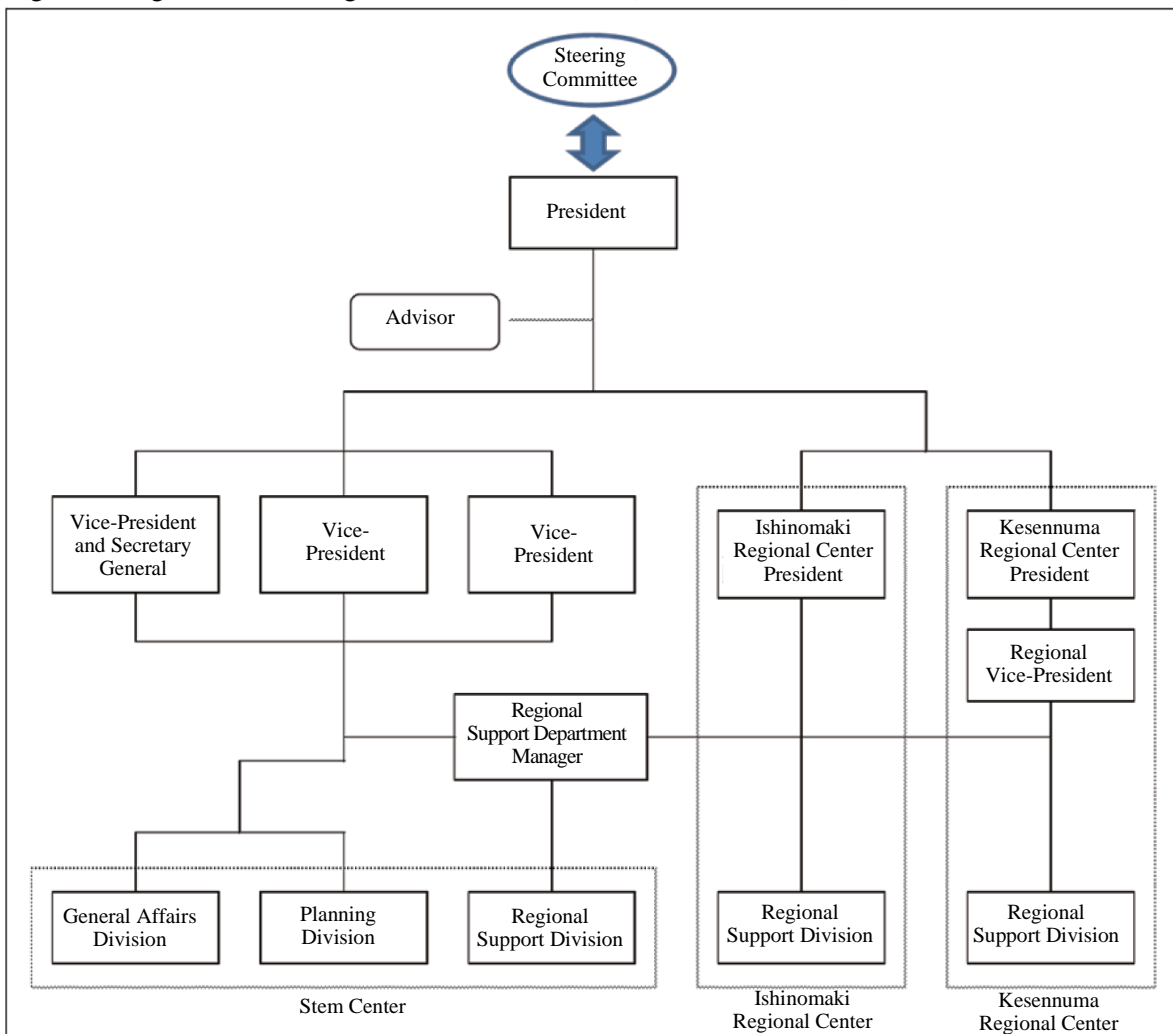
As part of the establishment process, the prefecture and the Association consulted with each other regarding the organization, staff recruitment, and management of the MDMHCC, and in September, the entrustment of MDMHCC management to the Association was officially decided.

On November 1, a preparation room was set up in Sendai, followed by the establishment of the Stem Center in December, and Regional Centers in Ishinomaki and Kesennuma in April 2012.

3. Organizational Diagram

The organization of the MDMHCC is as shown in Figure 1. The Stem Center comprises three divisions, and the Ishinomaki and Kesennuma Regional Centers are each composed of one.

Figure 1: Organizational Diagram of the MDMHCC (as of March 2013)



4. Personnel Counts by Occupation

The personnel and their occupations in each of the three arms of the MDMHCC are as given in Table 1.

Table 1: Personnel Counts by Occupation

As of 2/20/2013

	Stem Center			Ishinomaki Regional Center			Kesenuma Regional Center			Total			Total
	Full-Time	Part-Time	Municipal Transfer	Full-Time	Part-Time	Municipal Transfer	Full-Time	Part-Time	Municipal Transfer	Full-Time	Part-Time	Municipal Transfer	
Doctor	1	7	0	0	0	0	0	2	0	1	9	0	10
Clinical psychologist	2	4	0	1	0	0	2	1	0	5	5	0	10
Psychiatric social worker	7	1	0	2	0	3 Higashimatsushima (2) Onagawa (1)	2	1	1 Kesenuma	11	2	4	17
Public health nurse	3	1	0	2	1	0	1	0	0	6	2	0	8
Nurse	0	4	0	0	0	1 Ishinomaki Public Health Center	0	0	0	0	4	1	5
Occupational therapist	0	0	0	0	0	1 Ishinomaki	0	0	0	0	0	1	1
Administrative	5	0	0	0	0	0	0	0	0	5	0	0	5
Total	18	17	0	5	1	5	5	4	1	28	22	6	56

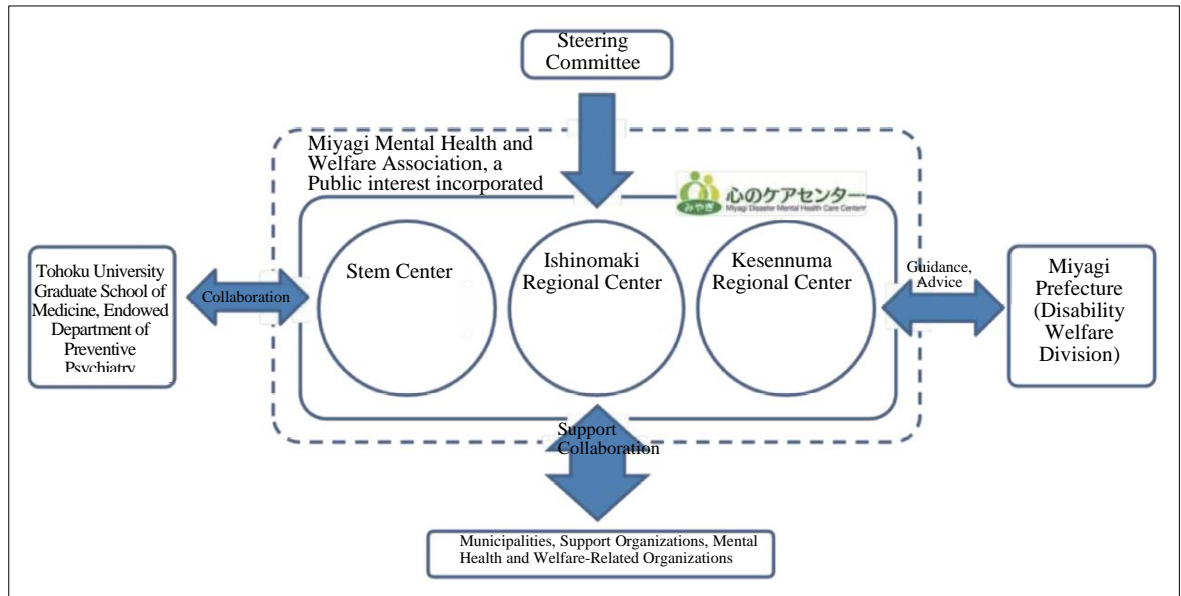
Temporary staff (administrative)				1			1			2	0	0	2
----------------------------------	--	--	--	---	--	--	---	--	--	---	---	---	---

Staff dispatch company	3									3	0	0	3
------------------------	---	--	--	--	--	--	--	--	--	---	---	---	---

5. Center Relationships

The relationships between the MDMHCC and affiliated organizations are as given in Figure 2.

Figure 2: MDMHCC Relationships



In terms of its duties within the Association itself, the MDMHCC could be said to be one executive department tasked with providing mental health care to disaster-affected persons.

The Steering Committee is essentially a third-party organization that examines and evaluates the project, contributes to the determination of management policies, and so on.

The Endowed Department carries out survey-based research and human resource development for the prevention of disaster-related diseases and collaborates with the MDMHCC on survivor support activities and the like.

As an administrative agency, the prefecture of Miyagi helps the MDMHCC secure funds and also provides guidance regarding overall management.

Municipalities, support organizations, and mental health and welfare-related organizations provide reciprocal support within the realm of certain activities for affected residents and community supporters.